
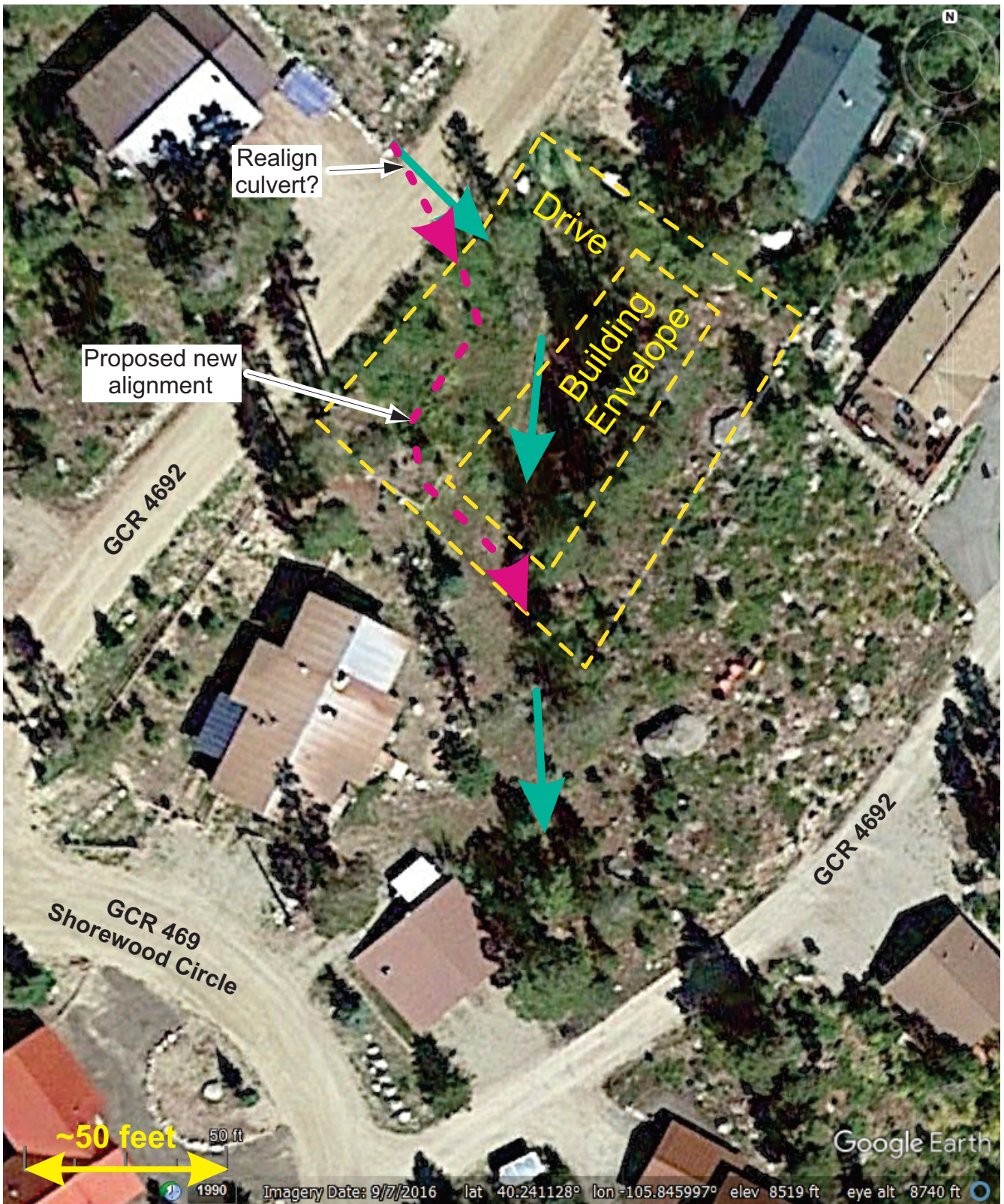


NOTES:

- A) Seasonal drainage on property receives stormwater from culvert passing under GCR 4692, flows across property to adjacent properties on the south
- B) Flow alignment estimated for initial planning purposes

<p>Landscape and Drainage Recommendations for the Wolk Property on GCR 4692, Lot 8, Block 8 of the Shorewood Subdivision GPS 40.24138°N and -105.84602°W</p>		
<p>Sheet 1: Project Layout with Estimated Stormwater Drainage Version 9Mar20</p>	<p>Design + Drafting: GSE Corps File# Not Applicable?</p>	 <p>Grand Environmental Services <i>Working with the Environment</i> TEXT 970-509-0199</p>



NOTES:

- A) Stormwater strategy is to re-shape landscape to carry flows around Wolk building envelope, slow water for infiltration, and discharge at the existing exit point to Stine
- B) Road culvert may need realignment to avoid drive

Landscape Drainage Recommendations for Wolk Property
 on GCR 4692, Lot 8, Block 8 of the Shorewood Subdivision
 GPS 40.24138°N and -105.84602°W

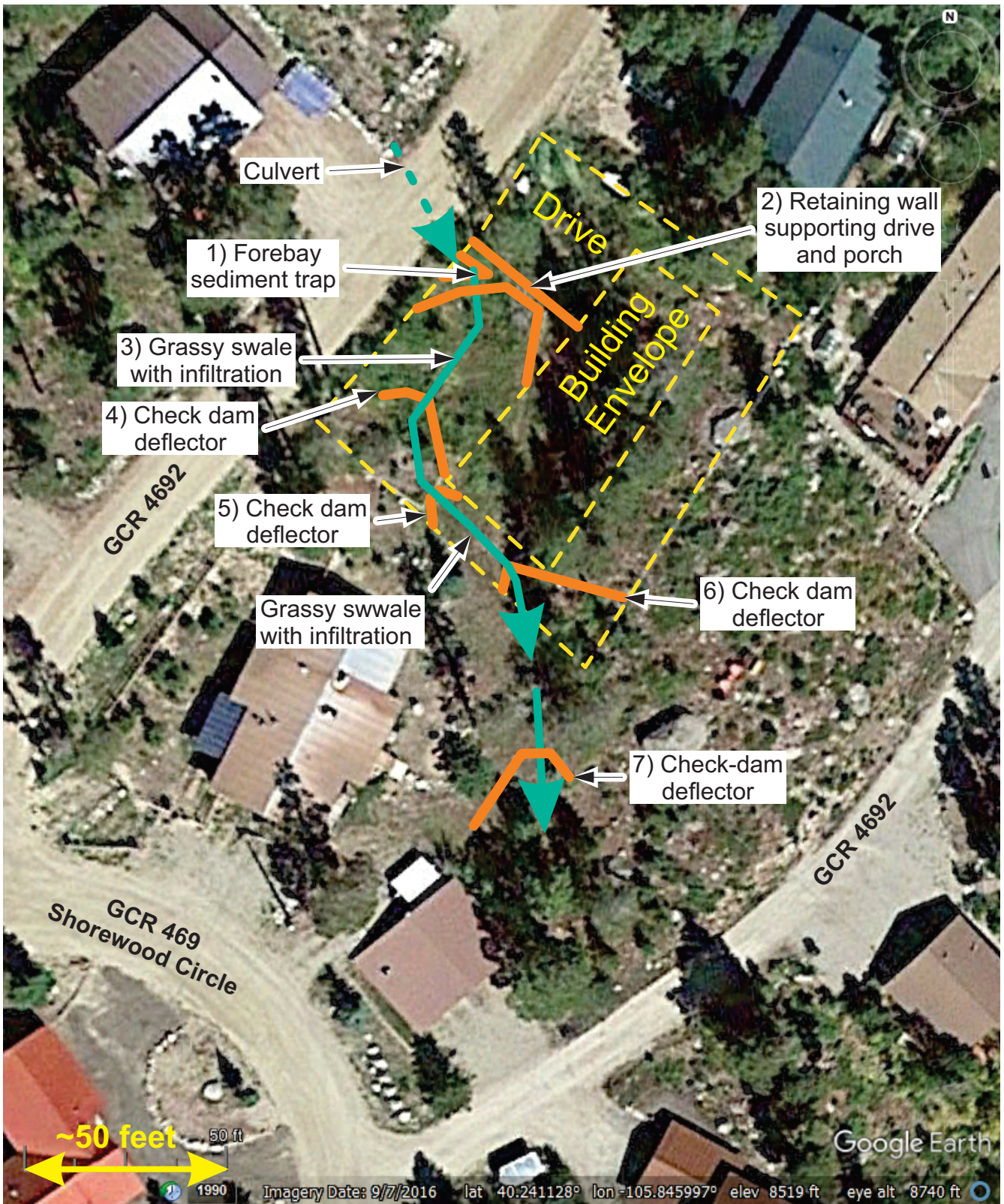
Sheet 2: Proposed
 Landscape
 Drainage Layout
 Version 9Mar20

Design + Drafting:
 GSE
 Corps File#
 Not Applicable?



Working with the Environment


TEXT 970-509-0199



NOTES:

- A) A series of check dam deflectors would direct stormwater flow away from houses
- B) Gravel beds between check dams would capture stormwater volume, promote infiltration
- C) Road culvert may need realignment to avoid drive


Landscape Drainage Recommendations for Wolk Property
 on GCR 4692, Lot 8, Block 8 of the Shorewood Subdivision
 GPS 40.24138°N and -105.84602°W

Sheet 3: Proposed Landscape Drainage Layout Version 9Mar20	Design + Drafting: GSE Corps File# Not Applicable?	 Grand Environmental Services <i>Working with the Environment</i> TEXT 970-509-0199
---	---	---



NOTES:

- A) Elevation of crawl space should be below grassy swale
- B) Recommend French drains along spread footers + addition drains in crawlspace
- C) Drains should daylight to grassy swale drainage system

<p>Landscape Drainage Recommendations for Wolk Property on GCR 4692, Lot 8, Block 8 of the Shorewood Subdivision GPS 40.24138°N and -105.84602°W</p>		
<p>Sheet 4: Proposed French Drain Layout Version 9Mar20</p>	<p>Design + Drafting GSE Corps File # Not Applicable?</p>	 <p>Grand Environmental Services <i>Working with the Environment</i> TEXT 970-509-0199</p>