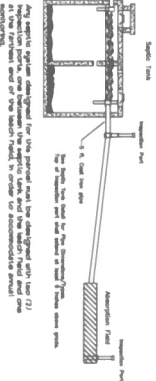
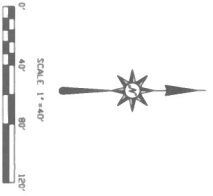
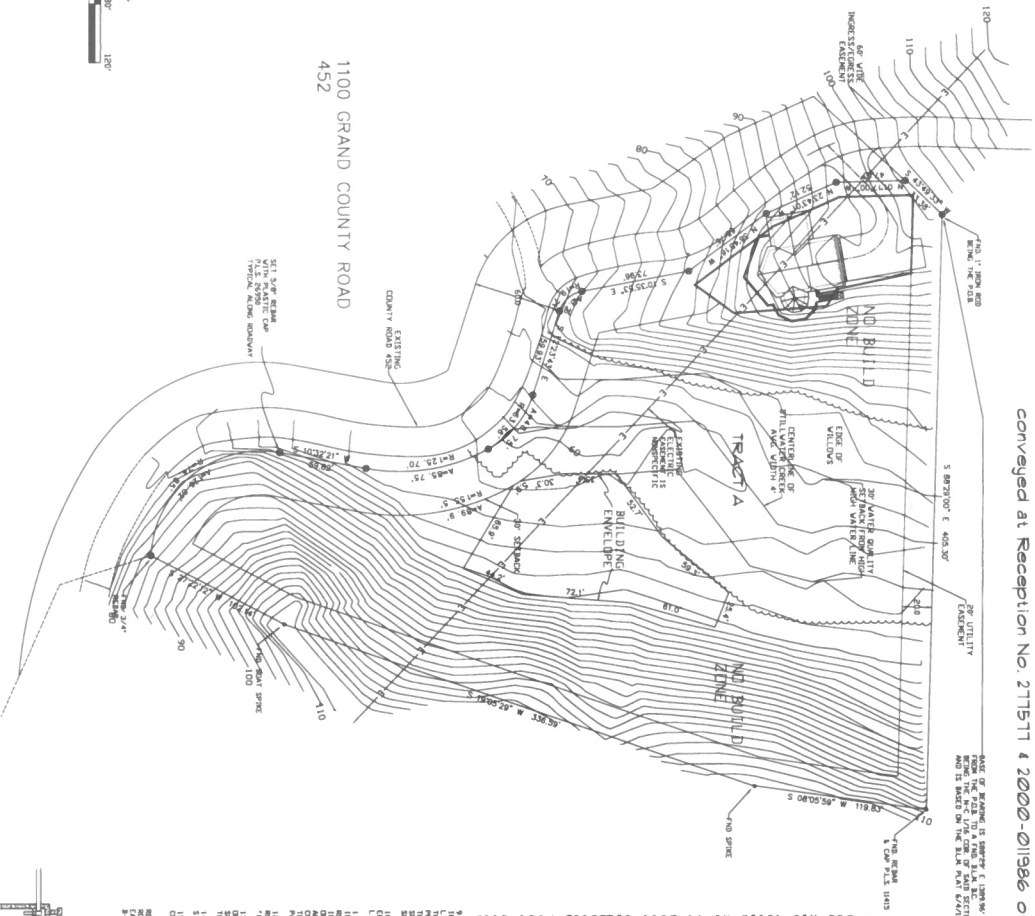


BUNTE SUBDIVISION EXEMPTION

OF A PARCEL OF LAND LOCATED IN
SECTION 22, TOWNSHIP 3 NORTH,
RANGE 76 WEST OF THE 6TH P. M.,
COUNTY OF GRAND, STATE OF COLORADO
conveyed at Reception No. 271571 & 2000-01196 of the Grand County Records.



NOTES:

- 1) All persons connected with this project are herewithly informed for one (1) year from the date of this subdivision map, that the Grand County Subdivision Exemption Regulations apply to this project.
- 2) 2000 DISTRICT 2206: The structure of any land may be extended and to change setback and grading rules.
- 3) An erosion and re-vegetation plan designed in compliance with applicable regulations and a final report on the plan shall be submitted to the County Engineer for review and approval.
- 4) Erosion and re-vegetation plan shall be approved and signed by the County Engineer.
- 5) Erosion and re-vegetation plan shall be approved and signed by the County Engineer.
- 6) Erosion and re-vegetation plan shall be approved and signed by the County Engineer.
- 7) Erosion and re-vegetation plan shall be approved and signed by the County Engineer.
- 8) Erosion and re-vegetation plan shall be approved and signed by the County Engineer.
- 9) Erosion and re-vegetation plan shall be approved and signed by the County Engineer.
- 10) Erosion and re-vegetation plan shall be approved and signed by the County Engineer.
- 11) The status of the plan shall be determined by the County Engineer.
- 12) The status of the plan shall be determined by the County Engineer.
- 13) The status of the plan shall be determined by the County Engineer.
- 14) The status of the plan shall be determined by the County Engineer.
- 15) The status of the plan shall be determined by the County Engineer.

BUNTE SUBDIVISION EXEMPTION	
GRAND LAND	
SURVEYING	
P.O.B. 1813	
GRAND, CO. 80446	
PHON: 970-687-1813	
FAX: 970-687-1813	
1 - 40' 11/1/05	2128