

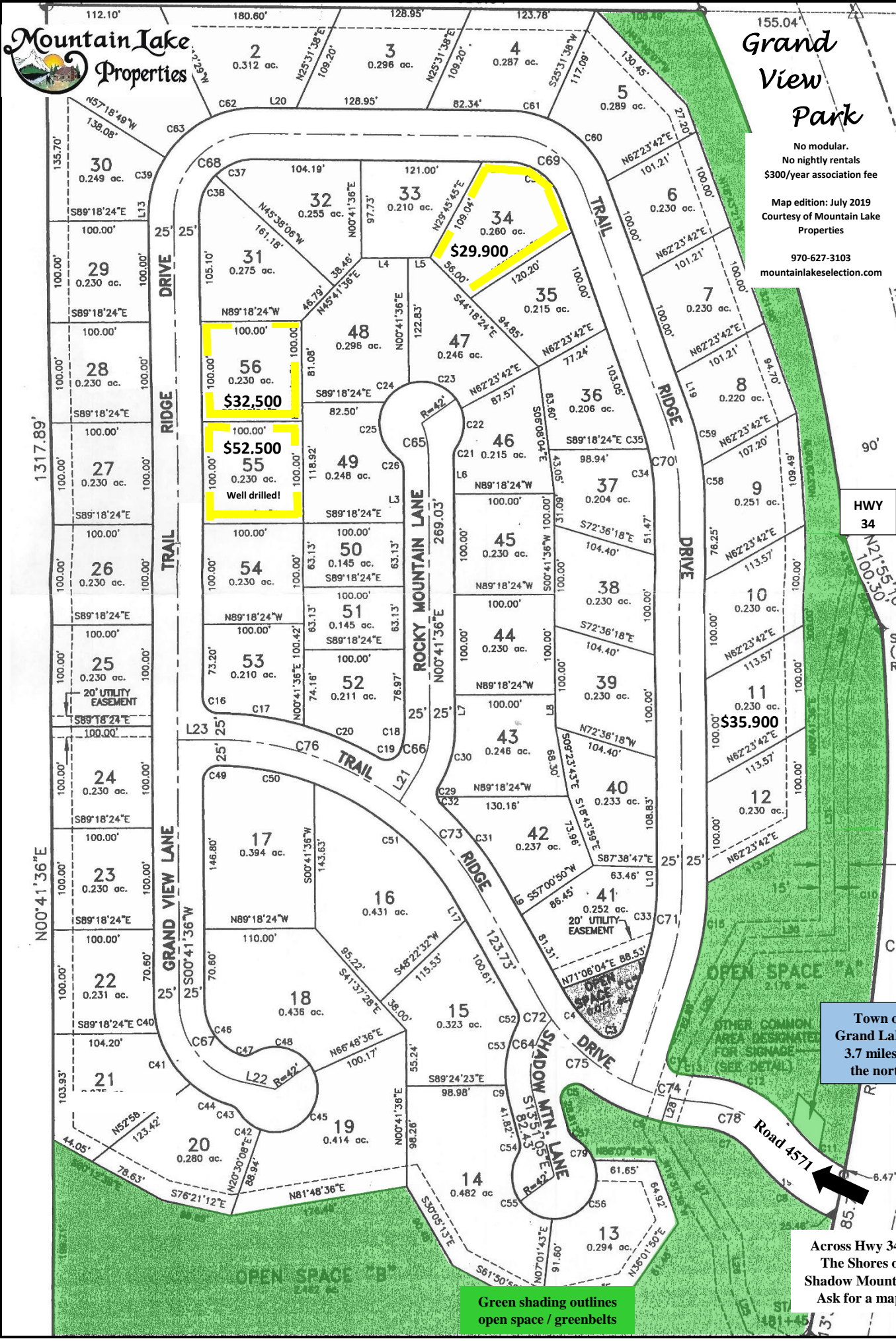


# Grand View Park

No modular.  
No nightly rentals  
\$300/year association fee

Map edition: July 2019  
Courtesy of Mountain Lake Properties

970-627-3103  
mountainlakeselection.com



Town of Grand Lake is 3.7 miles to the north

Across Hwy 34 is The Shores of Shadow Mountain. Ask for a map!

Green shading outlines open space / greenbelts